

C-9(Δ7)

A musical staff in treble clef with a common time signature. The key signature has one flat (Bb). The melody starts with a quarter rest, followed by a quarter note Bb, then an eighth-note triplet of C, D, and Eb. The rest of the staff contains eighth and quarter notes: Eb, E, F, G, Ab, A, Bb, B, C, Bb, A, G, F, E, D, C.

F-9(Δ7)

A musical staff in treble clef with a common time signature. The key signature has two flats (Bb, Eb). The melody starts with a quarter rest, followed by a quarter note Bb, then an eighth-note triplet of C, D, and Eb. The rest of the staff contains eighth and quarter notes: Eb, E, F, G, Ab, A, Bb, B, C, Bb, A, G, F, Eb, D, C.

Bb-9(Δ7)

A musical staff in treble clef with a common time signature. The key signature has two flats (Bb, Eb). The melody starts with a quarter rest, followed by a quarter note Bb, then an eighth-note triplet of C, D, and Eb. The rest of the staff contains eighth and quarter notes: Eb, E, F, G, Ab, A, Bb, B, C, Bb, A, G, F, Eb, D, C.

Eb-9(Δ7)

A musical staff in treble clef with a common time signature. The key signature has three flats (Bb, Eb, Ab). The melody starts with a quarter rest, followed by a quarter note Bb, then an eighth-note triplet of C, D, and Eb. The rest of the staff contains eighth and quarter notes: Eb, E, F, G, Ab, A, Bb, B, C, Bb, A, G, F, Eb, D, C.

Ab-9(Δ7)

A musical staff in treble clef with a common time signature. The key signature has four flats (Bb, Eb, Ab, Db). The melody starts with a quarter rest, followed by a quarter note Bb, then an eighth-note triplet of C, D, and Eb. The rest of the staff contains eighth and quarter notes: Eb, E, F, G, Ab, A, Bb, B, C, Bb, A, G, F, Eb, D, C.

C#-9(Δ7)

A musical staff in treble clef with a common time signature. The key signature has two sharps (F#, C#). The melody starts with a quarter rest, followed by a quarter note F#, then an eighth-note triplet of G, Ab, and A. The rest of the staff contains eighth and quarter notes: A, B, C, D, Eb, E, F#, G, Ab, A, B, C, B, A, G, F, E, D, C.

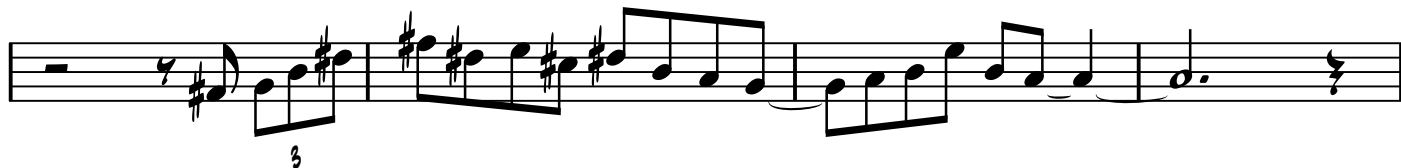
F#-9(Δ7)



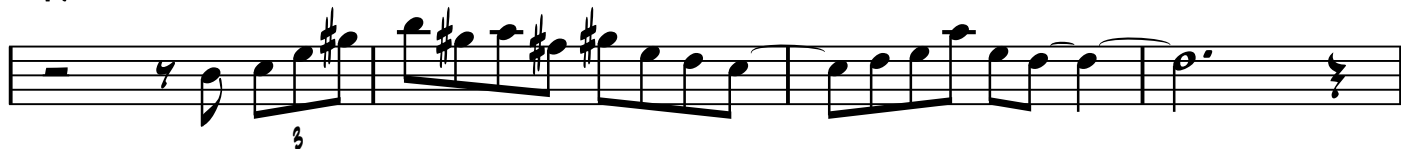
B-9(Δ7)



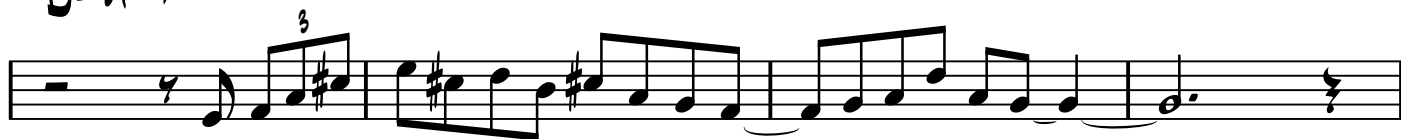
E-9(Δ7)



A-9(Δ7)



D-9(Δ7)



G-9(Δ7)

