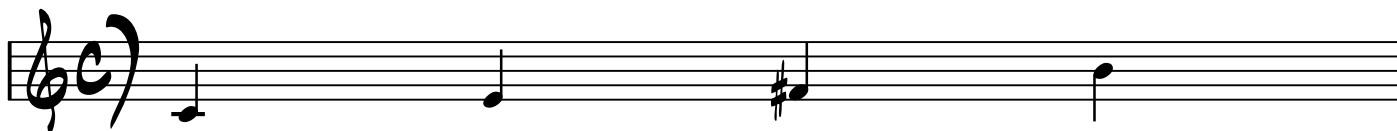


5 common harmonic contexts for a major 7 #11 voicing or 4 note cell:

$C\Delta 7(\#11)$

4 note cell built off the root (C Major 7 #11)



$C-6/9$

4 note cell built off the minor 3rd (Eb Major 7 #11 over C = C-6)



$C13$

4 note cell built off the b7 (Bb Major 7 #11 over C = C13)



$C7(\#9)$

4 note cell built off the major 3rd (E Major 7 #11 over C = C7 Alt)



$C-7(b5)$

4 note cell built off the b5 (Gb Major 7 #11 over C = C-7b5)

