

# SUS CHORDS

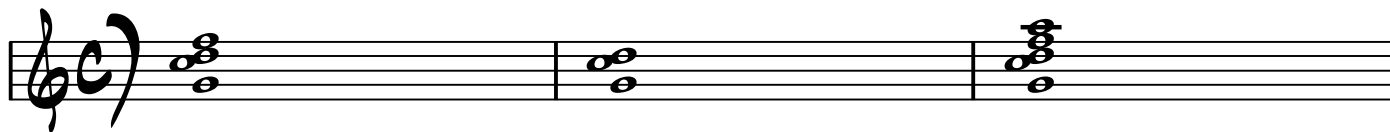
MATT OTTO

G7sus4

G7sus

Gsus

G9sus



G13sus

G7sus4 add 3



G MIXOLYDIAN

THE 3RD BECOMES A "COLOR" TONE OR UPPER-STRUCTURE TONE



POSSIBLE 4 NOTE CELLS OR TETRADS FROM G MIXOLYDIAN

G add 11

G add 9

A - add 9



A - add 11

B half diminished

C add 9



C add 11

D - add 9

D - add 11



E - add 11

F add 9

F add #11

F major shell add #11



\* THERE ARE NO "AVOID" NOTES IN A SUS MIXOLYDIAN CHORD/SCALE. YOU CAN ALSO TREAT THE SUS CHORD AS A REGULAR DOMINANT 7 THUS USING #11, BE-BOP SCALE, BLUES, AND CHROMATIC ENCLOSURES AND CHROMATIC PASSING TONES.