

RIVER SONG

CONCERT

OTTO

FOR SAM RIVERS

VAMP

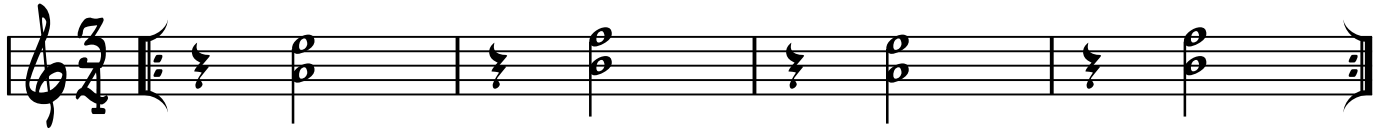
INTRO:

F Δ 7(#11)

D \flat 7ALT

F Δ 7(#11)

D \flat 7ALT



F Δ 7

G \flat 7(#11)



F Δ 7

E \flat 7(#11)



D-7

E \flat 9



D-7

B \flat -6



F Δ 7/A B \flat Δ 7

A7(b9) D-11

G-9 G \flat Δ 7

F-11 G \flat Δ 9

F Δ 7 D \flat 7ALT F Δ 7 D \flat 7ALT F Δ 7 D \flat 7ALT F Δ 7 D \flat 7ALT

OPT: SOLO ON BEATRICE

4X F Δ 7(#11) D \flat 7ALT F Δ 7 D \flat 7ALT ON QUE: A Δ 7(#11)