

DOUBLE HARMONIC - BYZANTINE - PERSIAN HUNGARIAN GYPSY - SCALE

CΔ7 b9. b13

Musical notation for the CΔ7 b9. b13 scale. The notation is written on a grand staff with a treble clef on the top staff and a bass clef on the bottom staff. The time signature is common time (C). The scale is played in two measures, each containing two phrases. The first phrase of each measure consists of a series of eighth notes, and the second phrase consists of a series of quarter notes. The notes are: C4, B3, A3, G3, F3, E3, D3, C4 in the first measure, and C4, B3, A3, G3, F3, E3, D3, C4 in the second measure.

D_b7 (#11) (#9) BEBOP

Musical notation for the D_b7 (#11) (#9) BEBOP scale. The notation is written on a grand staff with a treble clef on the top staff and a bass clef on the bottom staff. The time signature is common time (C). The scale is played in two measures, each containing two phrases. The first phrase of each measure consists of a series of eighth notes, and the second phrase consists of a series of quarter notes. The notes are: D_b4, C4, B3, A3, G3, F3, E3, D_b4 in the first measure, and D_b4, C4, B3, A3, G3, F3, E3, D_b4 in the second measure.

E (b9, #9, b13, 13) No 7

Musical notation for the E (b9, #9, b13, 13) No 7 scale. The notation is written on a grand staff with a treble clef on the top staff and a bass clef on the bottom staff. The time signature is common time (C). The scale is played in two measures, each containing two phrases. The first phrase of each measure consists of a series of eighth notes, and the second phrase consists of a series of quarter notes. The notes are: E4, D4, C4, B3, A3, G3, F3, E4 in the first measure, and E4, D4, C4, B3, A3, G3, F3, E4 in the second measure.

2 F-9(Δ 7) \sharp 11 b 13

Musical notation for the first system, consisting of two staves (treble and bass clef) with a brace on the left. The melody is written in the treble clef and the bass line in the bass clef. The notes are: Treble: F4, G4, A4, Bb4, C5, Bb4, A4, G4; Bass: F3, G3, A3, Bb3, C4, Bb3, A3, G3.

G13(b 9) b 5 ADD 11

Musical notation for the second system, consisting of two staves (treble and bass clef) with a brace on the left. The melody is written in the treble clef and the bass line in the bass clef. The notes are: Treble: G4, Ab4, Bb4, C5, Bb4, A4, G4; Bass: G3, Ab3, Bb3, C4, Bb3, A3, G3.

Ab Δ 7(\sharp 5) ADD \sharp 9

Musical notation for the third system, consisting of two staves (treble and bass clef) with a brace on the left. The melody is written in the treble clef and the bass line in the bass clef. The notes are: Treble: Ab4, Bb4, C5, Bb4, Ab4, G4; Bass: Ab3, Bb3, C4, Bb3, Ab3, G3.

C \sharp 7(\sharp 11) (\sharp 9)/ b BEBOP

Musical notation for the fourth system, consisting of two staves (treble and bass clef) with a brace on the left. The melody is written in the treble clef and the bass line in the bass clef. The notes are: Treble: C5, Bb4, Ab4, G4, F4; Bass: C4, Bb3, Ab3, G3, F3.

DOUBLE HARMONIC - BYZANTINE - PERSIAN HUNGARIAN GYPSY - SCALE

TRIADS

C D^b E D^b- E- F- D^b0 F0 C+ E+ A^b+

C Δ 7

C Δ 7(#5)

C SUS Δ 7

C ADD b9

D^b Δ 7

D^b Δ 7(#11)

D^b Δ 7 ADD #9

D^b7

D^b7(#11)

D^b7(#9)

D^b-7

D^b-(Δ 7)

C# Δ 7

C/C#

C# Δ 7

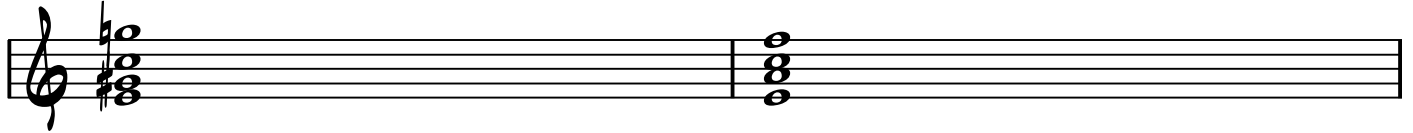
E-6

E Δ 6

E SUS ADD 3

2 E+ ADD #9

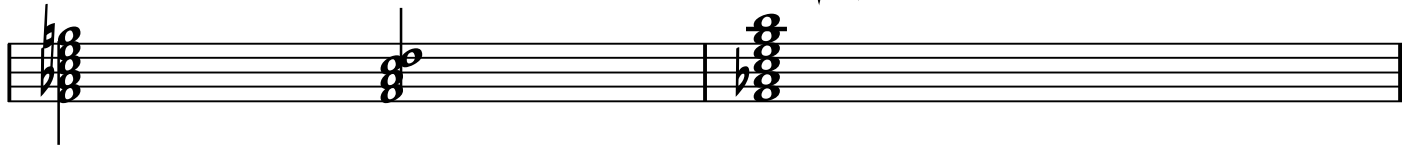
E SUS ADD b9



F-9(Δ7)

F-6

F-9(Δ7 #11)



C/F

E/F

F0(Δ7)

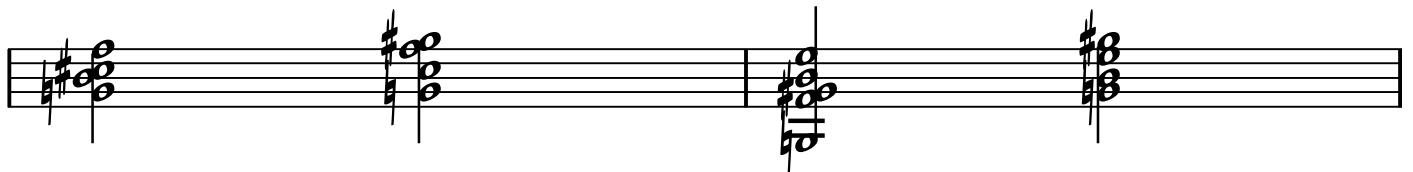


G7(b5)

G7(b9)

G13(b9)

E/G



G13(#11)

C#/G

F-/G



AbΔ7(#5)

C/Ab

G#0(Δ7)

E-/G#



DOUBLE HARMONIC - BYZANTINE - PERSIAN HUNGARIAN GYPSY - TETRAADS

The image displays handwritten musical notation for double harmonic tetraads across three staves. Each staff contains four chords, with their names written above the notes. The notes are arranged in a way that suggests a specific voicing for each chord.

Staff 1:

- Chord 1: C Add $\flat 9$ (Notes: C, E, G, $\flat 9$)
- Chord 2: C Add 11 (Notes: C, E, G, 11)
- Chord 3: $D\flat$ Add $\sharp 9$ (Notes: $D\flat$, $F\flat$, $A\flat$, $\sharp 9$)
- Chord 4: $D\flat$ Add $\sharp 11$ (Notes: $D\flat$, $F\flat$, $A\flat$, $\sharp 11$)

Staff 2:

- Chord 1: $D\flat-$ Add $\sharp 11$ (Notes: $D\flat$, $F\flat$, $A\flat$, $\sharp 11$)
- Chord 2: E Add $\flat 9$ (Notes: E, G, B, $\flat 9$)
- Chord 3: E Add $\sharp 9$ (Notes: E, G, B, $\sharp 9$)
- Chord 4: E- Add $\flat 9$ (Notes: E, G, B, $\flat 9$)

Staff 3:

- Chord 1: F- Add 9 (Notes: F, A, C, 9)
- Chord 2: F- Add $\sharp 11$ (Notes: F, A, C, $\sharp 11$)
- Chord 3: G7 Add $\sharp 11$ (Notes: G, B, D, $\sharp 11$)